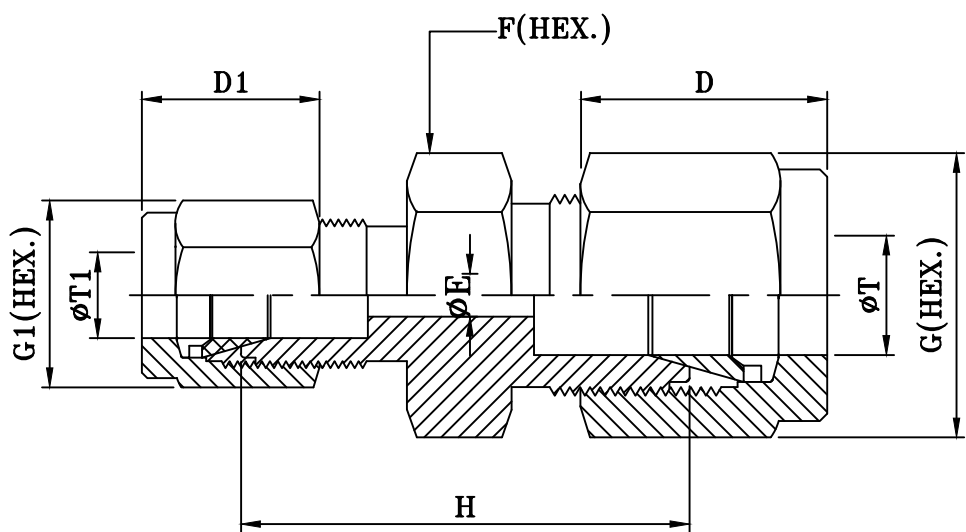


REDUCING UNION



PART NO	T	T1	F	G	G1	D	D1	E	H
RU4/2T	1/4"	1/8"	14.2	14.2	11.1	12.7	11.0	2.4	24.6
RU5/4T	5/16"	1/4"	15.8	15.8	14.2	13.5	12.7	4.5	27.4
RU6/5T	3/8"	5/16"	19.0	19.0	15.8	14.5	13.5	6.3	30.0
RU8/4T	1/2"	1/4"	22.2	22.2	14.2	17.5	12.7	4.5	29.5
RU8/5T	1/2"	5/16"	22.2	22.2	15.8	17.5	13.5	6.3	30.2
RU8/6T	1/2"	3/8"	22.2	22.2	19.0	17.5	14.5	8.0	31.0
RU12/8T	3/4"	1/2"	28.5	28.5	22.2	17.5	17.5	10.0	33.3
RU16/8T	1"	1/2"	35.0	38.0	22.2	20.7	17.5	10.0	38.0
RU16/12T	1"	3/4"	35.0	38.0	28.5	20.7	17.5	16.0	38.0

NOTES:
1) ALL DIMENSIONS ARE IN MM. UNLESS SPECIFIED.
2) PARTS TO BE FREE FROM BURR.
3) GENERAL TOLERANCE : ± 1 MM.
4) REF. STD. : ASTM F1387.

					DATE	BY	CUSTOMER :		
				DRAWN	01.04.10	AL	TITLE : REDUCING UNION		
				CHECKED			<div>Swastik Engg. Works</div> <div>GOREGAON (EAST), MUMBAI-400 063.</div>		
				APPROVAL					
NO	DESCRIPTION	SIGN	DATE						
REVISION				SCALE : NTS			MATERIAL :	DWG. NO : SEW-RU-01	REV.: